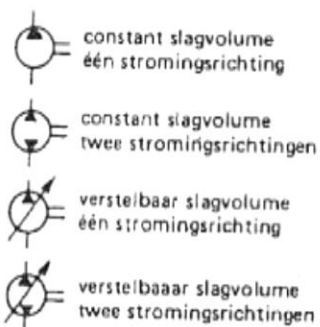


# SYMBOLEN VOOR HYDRAULISCHE EN PNEUMATISCHE INSTALLATIES (vlg. NEN 3348)

## POMPEN EN COMPRESSOREN

### hydraulische pompen

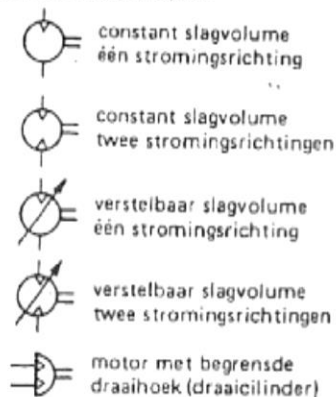


## MOTOREN

### hydraulische motoren



### pneumatische motoren



## CILINDERS

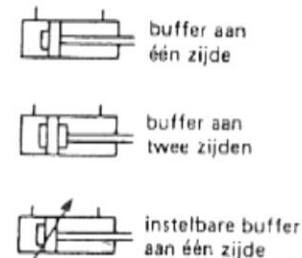
### enkelwerkende cilinders



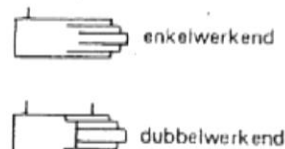
### dubbelwerkende cilinders



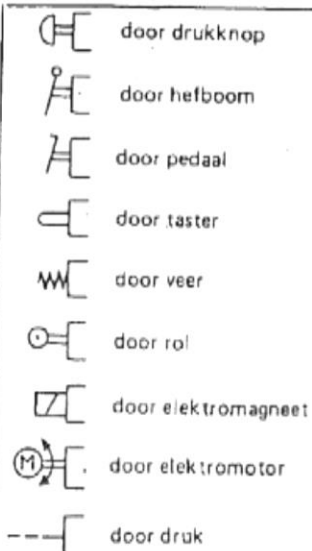
### cilinders met buffer



### telescoopcilinders

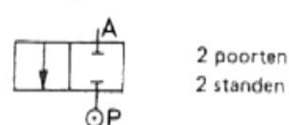


### Bedieningsmethoden (stuurschouven)



## STUURSCHUIVEN

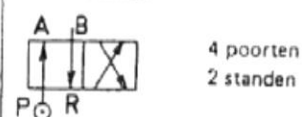
### 2/2 stuurschouf



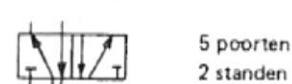
### 3/2 stuurschouf



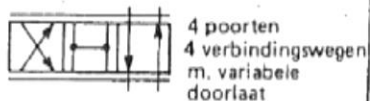
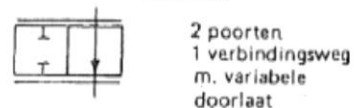
### 4/2 stuurschouf



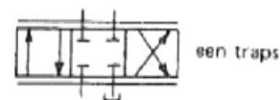
### 5/2 stuurschouf



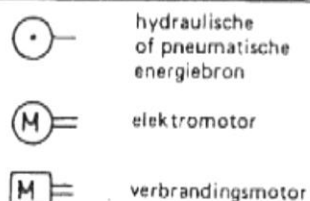
### Stuurschouven (met variabele doorlaat)



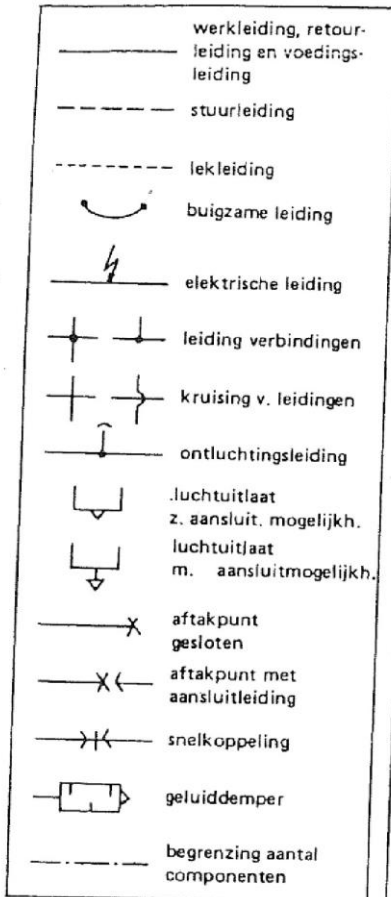
### Servoschouf



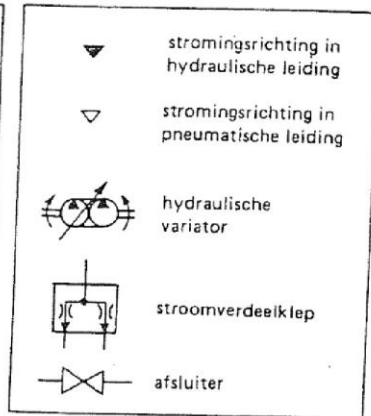
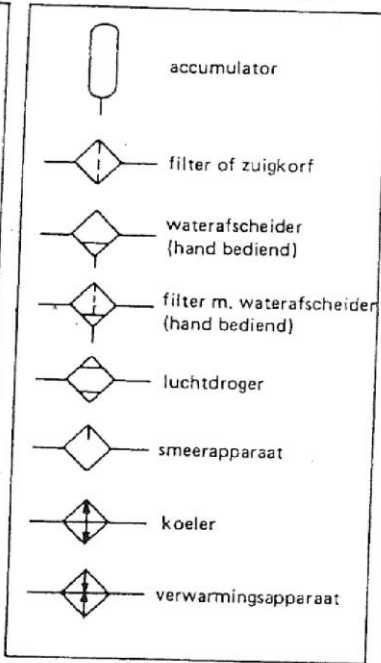
### energie



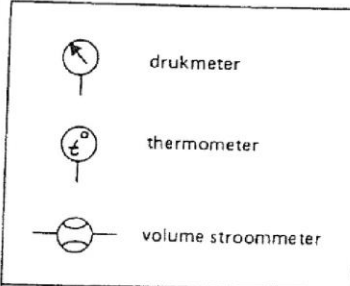
**STROMINGSLEIDINGEN en VERBINDINGEN**



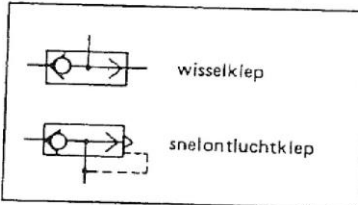
**ACCUMULATOREN, FILTERS, WATER- AFSCHEIDERS, SMEERAPP. e.d.**



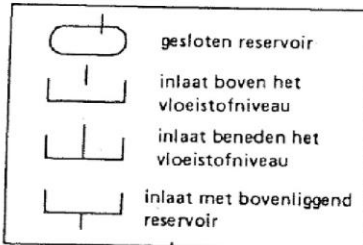
**MEETINSTRUMENTEN**



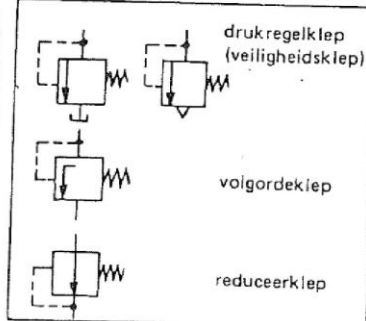
**KLEPPEN (wissel- en ontlucht-)**



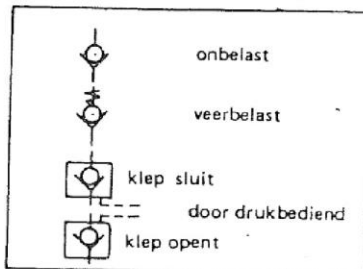
**RESERVOIRS (in verbinding m. buitenlucht)**



**DRUKREGELKLEPPEN**



**TERUGSLAGKLEPPEN**



**STROOMREGELKLEPPEN**

